

# MONTHLY MEMBERSHIP PROGRESS REPORT

LOCATION INDIA

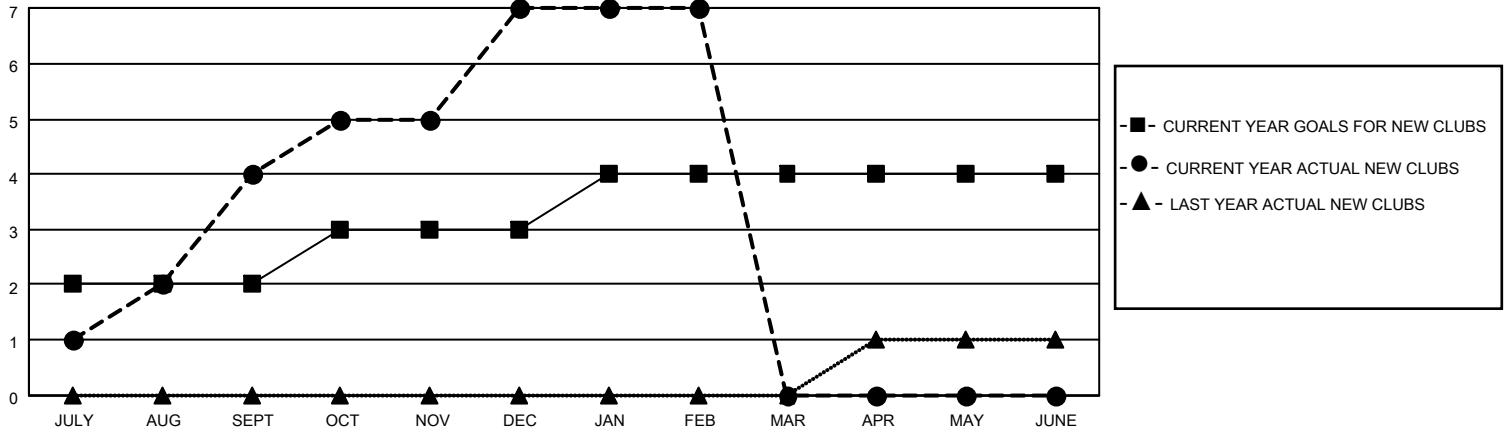
District 320 E

Results as of: 2/28/2021

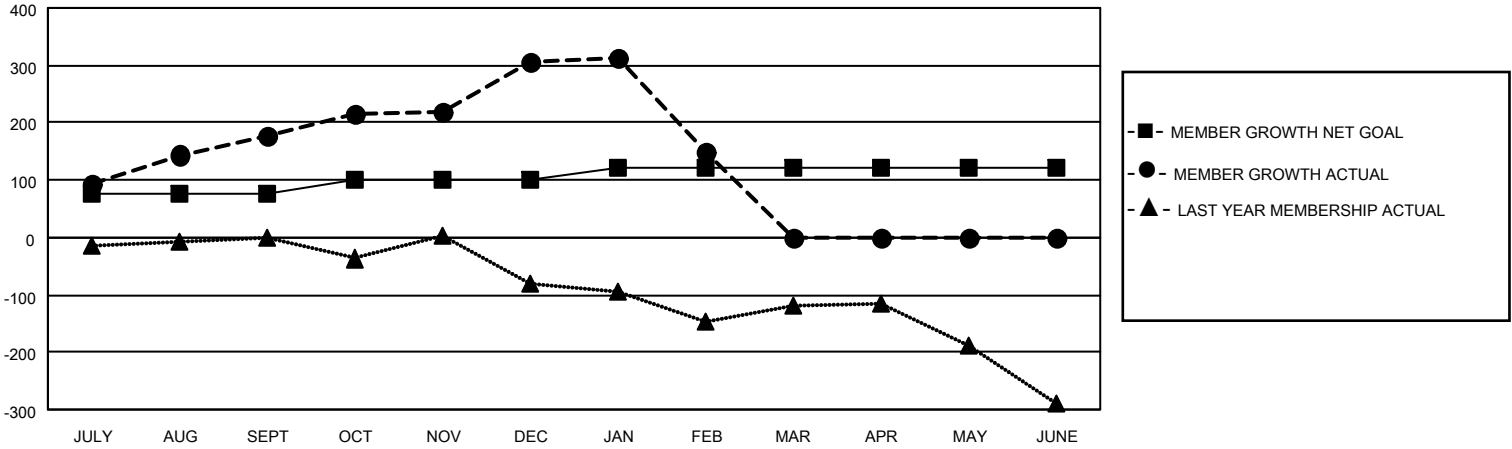
Clubs			
RESULTS FOR 2020-2021			
QUARTER	NEW CLUB GOAL	NEW CLUBS	DROPPED CLUBS
JULY/AUG/SEPT	2	4	0
OCT/NOV/DEC	1	3	0
JAN/FEB/MAR	1	0	11
APR/MAY/JUNE	0	0	0

Members			
RESULTS FOR 2020-2021			
QUARTER	MEMBER GROWTH NET GOAL	MEMBER GROWTH ACTUAL	DROPPED MEMBERS ACTUAL (including transfers)
JULY/AUG/SEPT	75	241	61
OCT/NOV/DEC	25	208	75
JAN/FEB/MAR	20	23	180
APR/MAY/JUNE	0	0	0

**GOALS AND ACTUAL NEW CLUBS CUMULATIVE**



**GOALS AND ACTUAL MEMBERS CUMULATIVE**



**DROPPED CLUBS: 11**

**37 CLUBS OF 72 ADDED 1 OR MORE NEW MEMBERS**

**GENDER DISTRIBUTION**

MALE            2,040 (68.48%)  
 FEMALE        939 (31.52%)

**DROPPED MEMBERS**

[CLICK HERE FOR CUMULATIVE MEMBERSHIP DATA](#)

DECEASED	7
CLUB CANCELLED	179
OTHER	130
<b>TOTAL</b>	<b>316</b>

TOTAL FAMILY UNIT MEMBERS	2,071
FAMILY MEMBERS PAYING HALF DUES	1,251